

# MTAC San Diego Branch Sonata Contest

December 17, 2016

San Diego State University

Entry Deadline: November 21, 2016

Entry Fee: \$35 per student

Register online and send one check payable to MTAC, San Diego Branch.

Send to: Lori Bastien Vickers

\*\*\*All music performed without repeats.

\*\*\*1<sup>st</sup> place winners from previous years must advance to next numerical group.

1A Bastien *Tap and Clap Sonatina*, from First Sonatina Experiences, p. 6-7 Kjos. (Open to students who have not yet reached their 9<sup>th</sup> birthday.)

Musical score for the first system of 'Tap and Clap Sonatina'. It features a treble and bass clef with a 4/4 time signature. The treble clef part starts with a melody marked 'mf (tap) (tap)\*' and includes a first fingering '1'. The bass clef part has a bass line with a first fingering '5'.

1B Bastien *Silver Sonatina*, 1<sup>st</sup> Movement, from Olympic Sonatinas, p. 7-8, Kjos. (Open to students of any age.)

Musical score for the first system of 'Silver Sonatina'. It features a treble and bass clef with a 4/4 time signature. The treble clef part starts with a melody marked 'mf' and includes a first fingering '1'. The bass clef part has a bass line with a first fingering '4'.

2A Bastien *Mini Sonatina No. 3*, 1<sup>st</sup> Movement From More Mini Sonatinas, p. 12-13, Kjos.

Musical score for the first system of 'Mini Sonatina No. 3'. It features a treble and bass clef with a 4/4 time signature. The treble clef part starts with a melody marked 'f' and includes a first fingering '1'. The bass clef part has a bass line with a first fingering '1'.

2B Gillock *Sonatina in G Major*, 3<sup>rd</sup> Movement *Alla Capriccio*, p. 5-7, Sheet Music, Willis.

Musical score for the first system of 'Sonatina in G Major, 3rd Movement'. It features a treble and bass clef with a 3/4 time signature. The treble clef part starts with a melody marked 'mf' and includes a first fingering '3'. The bass clef part has a bass line with a first fingering '5' and dynamic markings 'sf' and 'p'.

3A Vandall *Festiva Sonatina*, 2<sup>nd</sup> Movement p. 4-5, Sheet music, Alfred.

Musical score for the first system of 'Festiva Sonatina, 2nd Movement'. It features a treble and bass clef with a 3/4 time signature. The treble clef part starts with a melody marked 'mp' and includes a first fingering '1'. The bass clef part has a bass line with a first fingering '5'.

3B Alexander *Sonatina in F Major*, 3<sup>rd</sup> movement, from Simply Sonatinas Book 1, p. 6-8, Alfred.

Musical score for the first system of 'Sonatina in F Major, 3rd movement'. It features a treble and bass clef with a 4/4 time signature. The treble clef part starts with a melody marked 'f' and includes a first fingering '3'. The bass clef part has a bass line with a first fingering '1'.

4A Snell *Denver Sonatina*, 1<sup>st</sup> movement, p. 2-3, Sheet Music, Kjos.

Musical score for the first system of 'Denver Sonatina, 1st movement'. It features a treble and bass clef with a 4/4 time signature. The treble clef part starts with a melody marked 'mf' and includes a first fingering '3'. The bass clef part has a bass line with a first fingering '5' and the tempo marking 'Allegro'.

4B Clementi *Sonatina in G Major, Op. 36, No. 2*, 1<sup>st</sup> movement, from Bastien Sonatina Favorites Book 2, p. 18-19, Kjos.

Musical score for the first system of 'Sonatina in G Major, Op. 36, No. 2, 1st movement'. It features a treble and bass clef with a 2/4 time signature. The treble clef part starts with a melody marked 'p' and includes a first fingering '2'. The bass clef part has a bass line with a first fingering '5' and the tempo marking 'legato'.

5A Clementi *Sonatina in C Major, Op. 36, No 3, 1<sup>st</sup> movement, from Piano Literature, Vol. 3, p. 48-51, Kjos.*



5B Lynes *Sonatina in G Major, 3<sup>rd</sup> movement, From Four Analytical Sonatinas, Op. 39 p. 13-15, Alfred.*



6A Kuhlau *Sonatina in C Major, Op. 20, No. 1, 1<sup>st</sup> movement. Sonatinas for the Piano, Schirmer, p. 3-4.*



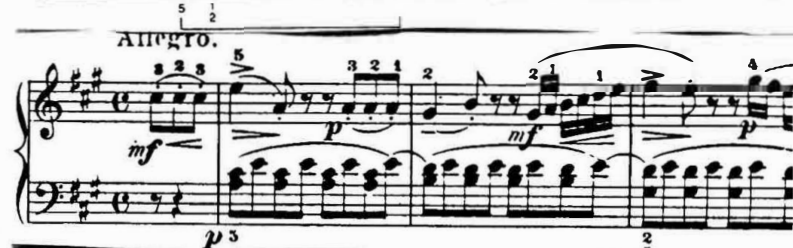
6B Olson *Sonatina in Colors, Red, p. 16-20, Sheet Music, The FJH Music Co.*



7 Agay *Sonatina, No. 3, 1<sup>st</sup> movement, Sheet music, Alfred, p. 3-7*



8 Kuhlau *Sonatina in A Major, Op. 59, No. 1, 1<sup>st</sup> movement, from Kuhlau Sonatinas Book 1, p.47-51, Schirmer.*



9 Mozart *Sonata in C Major, K. 309, 1<sup>st</sup> Movement, any standard edition.*



10 Haydn *Sonatina in D Major, 1<sup>st</sup> movement, Hob. XVI: 37, any standard edition.*



11 Beethoven *Pathetique Sonata, Op. 13, No. 1, 1<sup>st</sup> movement, any standard edition.*

